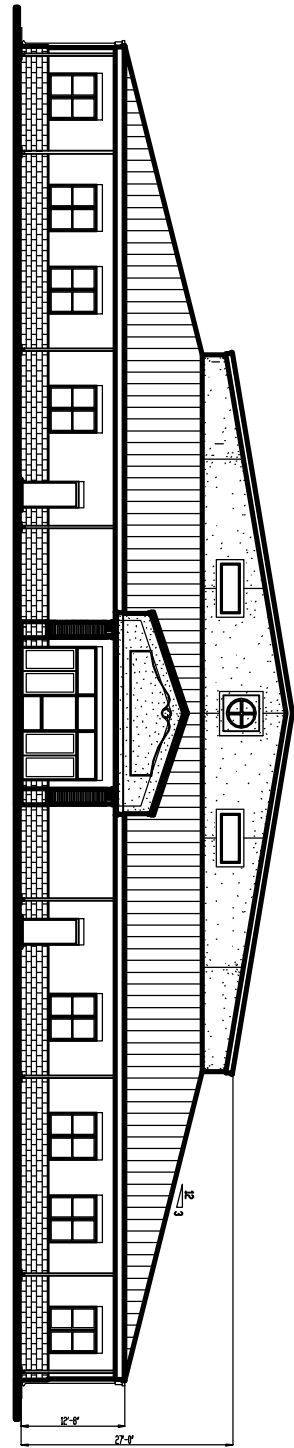


SIDE ELEVATION

SCALE: 1/8" = 1'-0"

SHEET NUMBER

A2.0



FRONT ELEVATION

SCALE: 1/8" = 1'-0"

SHEET TITLE
 FRONT & SIDE
 ELEVATIONS
 PROJECT NUMBER
 FILE NUMBER
 DATE

NEW SECONDARY SCHOOL/GYMNASIUM
 FOR
PRATTVILLE CHRISTIAN ACADEMY
 PRATTVILLE ALABAMA

MARSHALL
 CONSTRUCTION
 General Contractors
 P.O. Box 70128 Montgomery, Alabama 36107-0128
 www.marshallconstruction.com